

Sertoma

Camp Confidence Sertoma Club



POB 2832
Baxter, MN 56425

Inside this issue:

Are you using the right address?	2
Volunteer—A Bit of Poetry—A Lot of Thanks	2
ASL—Deaf Culture	3
Grant Money	3
Wanted: Camp Director	4
Camp Sertoma Meets "Moms"	5
Fundraiser in Progress	5
Calendar	6

PRESIDENT'S CORNER

Welcome to our new year with Camp Confidence Sertoma Club. We had a fantastic time this last year under Dave Burggraff's leadership. We have a new cabin at Camp Confidence Sertoma equipped for Deaf and hard-of-hearing youth and staff. Thank you to Maynard Johnson for this tremendous gift. We had a total of 62 children show up for camp this past summer and they were guided by a hard working staff and volunteers. We need to be promoting camperships now for this coming year. Our goal is 80 camperships. Talk it up in your clubs and organizations.

We continue to learn a lot about the operation of Camp Sertoma, and we will build on our experiences. We know that we need to hire a Camp Sertoma Director as Bob Slaybaugh has too many responsibilities to continue to run our program.

On September 23rd, we had our first board meeting followed by a noon luncheon. This took place at Confidence Learning Center where we joined our guests—30 moms of Deaf and hard-of-hearing children. They provided our program. Read more about this on page 5 of this newsletter. We are hoping that these ladies will join Camp Confidence Sertoma Club so that we can work together for a common cause.

The raffle sale is on now! Sell those tickets as this is a major fund raiser to help support Camp Sertoma.

Get Involved!

Gene



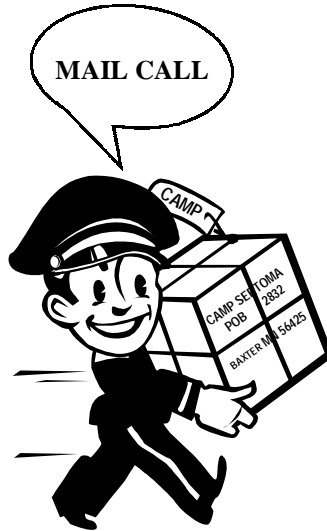
Would you like to receive your Camp Confidence Sertoma Club Newsletter by e-mail?

Please let us know by e-mailing hckalkman@hotmail.com.

It will be sent to you in an accessible format; but you do need Adobe Acrobat Reader. If this is not available on your computer, download it for free at www.adobe.com.

Camp Confidence Sertoma Club Officers

COB:	Dave Burggraff	VP Sponsorship/PR:	Tom Reding
President:	Gene Finger	VP Membership:	Roz Haapajoki
President Elect:	Joan Kalkman	VP Programs:	Bob Slaybaugh
SOA:	Peter Mogenson	Director of Awards:	John Siewert
Secretary:	Debby Larsen	Director of Socials:	Larry Wild
Treasurer:	Brenda Meech		



As with any successful organization, confusion usually accompanies growth. This necessitates dedication to conformity.

Let's begin with our mail! Please direct all mail for Camp Confidence Sertoma to P.O. Box 2832, Baxter, MN 56425. This address was established exclusively for servicing Camp Sertoma.

Your use of this POB will ensure efficiency. Your mail will be immediately routed to the responsible Sertoma club member.

Why be a Volunteer?

It's not for money, it's not for fame
and it's not for any personal gain.

It's for love of fellow man,
it's just to lend a helping hand.

It's just to give the tithe of self.

That's something you can't buy with wealth.

It's not the medals worn with pride.

It's just for that feeling deep inside.

It's that reward down in your heart.

It's the feeling that you've been a part

of helping others far and near,

that makes you a VOLUNTEER.

Anonymous

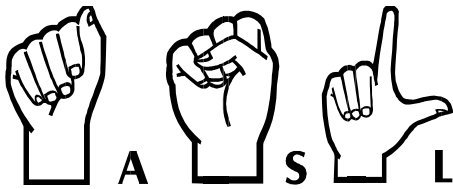
Welcome! A new Camp Sertoma service year has begun. THANK YOU to all that serviced our success! Involvement builds individual pride, growth, and SERVICE TO MANKIND.

We are honored and grateful for the guidance of our outgoing club officers. You have graced us with a powerful beginning toward opening many young minds and hearts to camping the great outdoors of Camp Confidence. And of course, we will never forget Jon Haapajoki—the soul forever present in our club.

In the words of past International President Jerry Losey, "If there are finer volunteers in North America [Sertomans], I have yet to meet them." And now is a great time to volunteer for Camp Confidence Sertoma Club. The building blocks have been laid and we need you to continue the construction.

Welcome to Camp Sertoma and welcome to SERVICE TO MANKIND. Service opportunities await your care and attention. While we certainly have a great foundation, there is still much work to be done.

Please contact Gene Finger (507-663-7076) to communicate your interest for more involvement, or bring to his attention your perception of latent talents that exist in our club. As with any great service club, its strength is its volunteers. Let's maintain the strength so gallantly built in our past year.



American Sign Language (ASL) was developed by American Deaf people to communicate with each other and has existed as long as there have been Deaf Americans. Traditionally, ASL has been passed from one generation to the next in the residential school environment, especially through dormitory life. Even when signs were not permitted in the classroom, the children of Deaf parents, as well as Deaf teachers and staff, would secretly pass on the language to other students. ASL is now used by approximately one-half million Deaf people in the U.S. and Canada.

Since the late 1800's, Deaf people have been discouraged from using ASL. Many well-meaning but misguided educators, believing that the only way for Deaf people to fit into the hearing world is through speech and lip-reading, have insisted that Deaf children try to learn to speak English. Some have even gone so far as to tie down Deaf children's hands to prevent them from signing. Despite these and other attempts to discourage signing, ASL continues to be the preferred language of the Deaf community. Far from seeing the use of sign as a handicap, Deaf people regard ASL as their natural language, which reflects their cultural values and keeps their traditions and heritage alive.

Many people mistakenly believe that ASL is English conveyed through signs. Some think that it is a manual code for English, that it can express only concrete information, or that there is one universal sign language used by Deaf people around the world.

Linguistic research demonstrates, however, that ASL is comparable in complexity and expressiveness to spoken languages. It is not a form of English. It has its own distinct grammatical structure, which must be mastered in the same way as the grammar of any other language. ASL differs from spoken language in that it is visual rather than auditory. It is composed of precise handshapes, locations of those handshapes, and movement of handshapes along with facial and mouth movement.

ASL is capable of conveying subtle, complex, and abstract ideas. Signers can discuss philosophy, literature, politics, education, sports, etc. Sign language can express poetry as poignantly as can any spoken language and can communicate humor, wit, and satire just as biting. As in other languages, new vocabulary items are constantly being introduced by the community in response to cultural and technological change.

ASL is not universal. Just as hearing people in different countries speak different languages, Deaf people around the world sign different languages.

**ASL is not a form of English . . .
ASL is capable of conveying subtle, complex, and abstract ideas . . .
ASL is not universal.**



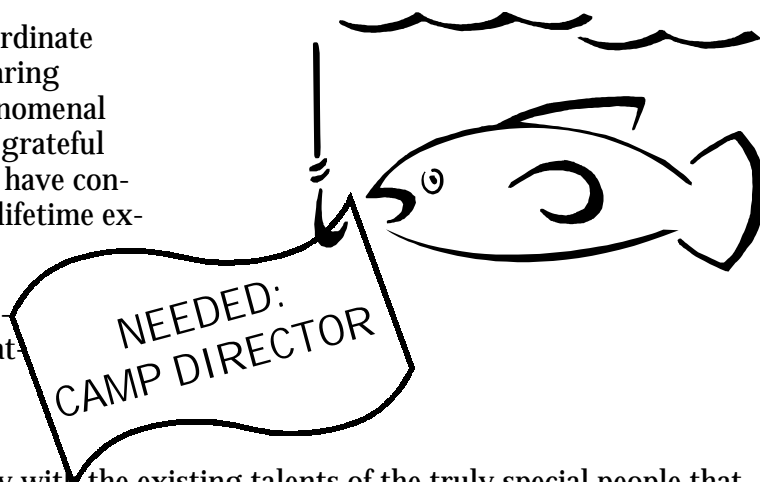
Camp Confidence Sertoma received its grant! Karen Owen dedicated her time to coordinate an application for a matching grant through Sertoma International's Foundation. The generosity of the following Sertoma clubs made this possible: Brainerd Morning and Noon, St. Cloud Westside, Willmar, and Camp Confidence. Their collective contributions of \$4,000 gifted Camp Sertoma with a total of \$6,000. Camp Sertoma is grateful! Here is how the money will be spent.

Telecommunication Devices (TDD's or TTY's) and Computer e-mail are major communication lifelines within the deaf community. Given the astounding growth of Camp Sertoma—the second session experienced an attendance growth of 400%—TTY's and computers will be purchased to foster communication between our young campers and their families.

Thank you to all who take part in contributing to our goals for Camp Confidence Sertoma.

Bob Slaybaugh has given himself completely to coordinate camping experiences for many deaf and hard-of-hearing youth. His care and generosity have realized a phenomenal growth in Camp Sertoma. Along with Bob, we are grateful for all the staff of Confidence Learning Center who have contributed their skills and individual talents to bring lifetime experiences to our young campers.

Realization of our phenomenal growth leads to a realization that Camp Sertoma needs help in coordinating, organizing, and enhancing the experiences of Camp Sertoma.



We are looking for a Camp Director to work closely with the existing talents of the truly special people that create Camp Sertoma. Currently, Camp Sertoma services Deaf and hard-of-hearing youth ages 5 through 14. This position will work closely with Bob Slaybaugh and all the staff of Confidence Learning Center. This position will also be responsible to Camp Confidence Sertoma Club Board of Directors. Here is a listing of qualifications and general responsibilities.

QUALIFICATIONS:

- *Prior experience working with youth who are Deaf or hard of hearing
- *Proficiency in American Sign Language
- *Prior camp related experience
- *Prior supervisory experience
- *Strong communication and leadership skills
- *Certification in Red Cross 1st Aid & CPR or equivalent
- *MN Medication Certification

GENERAL RESPONSIBILITIES:

- *Become familiar with the staff and facilities at Confidence Learning Center
- *Review, familiarize and suggest changes to camp budget
- *Coordinate/establish camp session dates with Confidence Learning Center
- *Recruit staff, review applications, interview, make hiring recommendation
- *Coordinate camp promotions for potential campers
- *Oversee all camp sessions and related logistics
- *Facilitate camper registration process
- *Plan menu for camp sessions and make food purchases
- *Facilitate training and in-service for camp counselors
- *Serve as role model and supervisor to camp counselors
- *Be on site during camper registration to greet campers and parents
- *Responsible for camper medication, administration and record keeping
- *Be available to assist camp counselors as needed during camp sessions
- *Be on site last day of each session to greet parents and camper departure
- *Facilitate weekly debriefing with camp counselors to prepare for next session
- *Coordinate camper/parent evaluation process following each camp session

Please direct
your Résumé and
other supporting
documentation to
Camp Sertoma
POB 2832
Baxter, MN 56425

CAMP CONFIDENCE SERTOMA CLUB MEETS "MOMS"

Many members of Camp Confidence Sertoma Club came together on Saturday, September 23, 2000. This was one day of a weekend retreat for Mom's of deaf and hard-of-hearing children. The "Mom's Retreat" was sponsored by Camp Confidence Sertoma Club.

Camp Confidence Sertoma Club presented its origin, goals and successes. In turn, Camp Sertoma Club members learned about the origin, goals, and successes of the 14th annual "Mom's Retreat."

The "Mom's Retreat" exists for mother's of deaf and hard-of-hearing children. These mother's brainstorm and network for the purpose of overcoming the many challenges they and their families face as they raise their deaf and hard-of-hearing children in a predominantly hearing world; which isn't always sensitive nor aware of the many complications associated with deafness.

Joan Duffy, a mother of Camp Sertoma camper, Jordan, shared with us her personal story of the many challenges she has faced since discovering her son could not hear. These challenges existed within her own family, and extended to the neighborhood, school, church, and other community facilities/activities. This was a very moving and enlightening presentation.

Joan also served Camp Sertoma as a camp counselor during the summer week of 1998 so both she and her son are familiar with the experiences of Camp Sertoma. She shared with us her feelings of the importance of Camp Sertoma, and her gratitude for the week long camping adventures experienced by Jordan.

Thank you Joan Duffy for your involvement and what you, and all the "Moms" taught us.

Thank you too to Joan Treichel for coordinating our time together. We are excited about our future relationships.

RAFFLE

The Double Dollar Raffle fund raiser has begun. All Camp Sertoma members received their tickets. A total of 1000 tickets have been printed and official drawings will begin the first week of January, 2001. Two winning tickets will be chosen every week during the year 2001. Those winners will receive double their investment—\$40.

Initially, it was announced that each Camp Sertoma Club member would receive 5 tickets to sell. Oops! A mailing error occurred and all members received 10 tickets. This is a great time to reset your personal goals! Keep toting those tickets around and make an extra effort to sell or purchase all 10 tickets. Here is a great idea offered by Jeff Olson. **STOCKING STUFFERS!** Your children, nieces, nephews, grandchildren, and great grandchildren will be delighted to find these hiding in their stockings and anxious as they wait week after week to see if they are the lucky winner of \$40.

Of course, if all your efforts are exhausted and you absolutely can't sell or buy another ticket, please return your tickets to the attention of Gene Finger, Camp Sertoma, POB 2832, Baxter, MN 56425.



exhausted and you absolutely can't sell or buy another ticket, the attention of Gene Finger, Camp Sertoma, POB 2832, Baxter, MN 56425.

Please also use this address to return your money and tickets sold.

During its first year, this fundraiser gifted Camp Sertoma with \$5,000! Another \$5,000 was paid to the MN Endowment Fund! On Saturday, September 23, 2000, the Camp Sertoma Board met and voted to split all money for 2001 proceeds—50/50—between Camp Sertoma and the Jon C. Haapajoki Camp Confidence Sertoma Memorial Fund. In honor of Jon Haapajoki, this memorial fund was established to create a self-perpetuating fund that ensures an opportunity for every interested deaf and hard-of-hearing youth to attend Camp Sertoma. The goal is to raise \$250,000 by May, 2001. The annual interest proceeds will be used to fund Camp Sertoma.

CAMP CONFIDENCE SERTOMA MEMBER LIST

*Alexander, Peter C.	320-597-2702	*Grunzke, Betty J.	507-237-2533	*Phillips, Randy	218-568-4779
*Augustinack, Steve R.	218-829-2185	*Gulbrandsen, Kristen A.	320-231-1437	*Plagge, Wayne D.	507-359-3050
Bailey, Stephanie (Steffie)		*Haapajoki, Rosalyn	218-829-1861	Radermacher, Jake	
*Bartels, Chuck	218-829-7977	*Hansen, Holly	507-359-1572	Reding, Thomas	605-334-2462
*Bonde, Erik R.	218-829-4350	*Haugen-Segler, Virginia	218-829-0492	*Rohde, Diane	218-736-4990
Brummer, Lisa	218-739-3797	Hazel, Iris M.	515-573-3638	*Rohde, Myron (Mike)	218-736-4990
Budzinski, Brett		Hervert, Valerie	402-483-1008	*Rosenberger, Thomas L.	218-829-1136
*Burggraff, David E.	218-963-3402	Howard, Mike	218-829-4381	Senne, Dean	
Burggraff, Donna	218-963-3402	*Johnson, Milo	218-828-8549	*Sherman, Ann L.	218-828-4534
*Bye, Pam	218-829-6735	*Johnson, Pam	701-232-2490	*Sherman, Robert B.	218-828-4534
Caine-Helwig, Diane	717-938-5677	*Johnson, Sharon E.	218-825-0738	*Sherman, Sam R.	218-828-4534
*Campbell, Reed A.	218-829-1783	*Kalkman, Joan L.	320-202-0569	*Siewert, John (Zippy)	507-237-2914
*Christensen, Dennis D.	218-828-4303	*Kriha, Bonnie E.	218-829-2522	Skogen, Geri M.	218-829-3510
*Culhane, Roger J.	507-645-7892	*Kuss, Pat	218-828-8271	*Slaybaugh, Robert A.	218-568-5825
*Detjen, Michael	507-663-0108	*Larsen, Debra K.	507-645-2308	*Sommers, Joanne	507-645-4195
Devenow, Pearl		*Lee, Bette G.	507-663-7082	*Stark, Glee E.	507-663-1312
DeVlaeminck, Leona	507-237-5397	Lee, Franklin	507-663-7082	Stromstad, Sara	
Dudding, Joe P.	218-963-7768	*Lockaby, Ronda R.	218-739-2786	*Sydnes, Julie	507-645-0492
Dudding, Susan K.	218-963-7768	*Lockaby, Todd A.	218-739-2756	Thiel, Sandy	701-237-4086
*Ehrich, Lorraine B.	218-829-8852	*Marana, Mary	218-828-4539	Walseth, Gerald (Jerry)	
*Ehrich, Robert R.	218-829-8852	*McNeill, Deborah L.	507-645-5296	Walsh, Andrew M.	218-963-7768
*Ellingson, David A.	218-825-1590	*Meech, Brenda L.	218-828-8387	Walsh, Matthew	218-829-7471
*Ellingson, Kim L.	218-829-1590	*Mogensen, Peter A.	218-828-1586	*Webb, Tami J.	218-828-6288
*Ellison, Christine	507-663-7076	*Myres, Brian H.	320-202-2265	*Wentzel, Arvid (Pete)	507-375-4911
*Finger, Gene	507-663-7076	*Nelson, Shirley A.	507-645-5519	Whitaker, Joan W.	706-845-7012
Franz, Les	218-829-5991	Novak, Susan K.	218-739-0359	*Wild, Larry	507-278-4259
*Fritsche, James R.	507-289-8203	*Olson, Greg D.	218-825-9258	Wilkes, Jeffy	605-332-5886
*Gau, Lois M.	507-524-3680	*Olson, Jeff A.	218-828-4303	Wuertz, Cara	612-377-9603
*Gerdes, Sandra R.	507-645-2290	*Owen, Karen J.	218-829-4603		
*Groppe, Paul	218-829-7790	Perry, Tanya			

* denotes Charter Members



At your next attendance of a Camp Sertoma function, make an effort to search for and welcome our newest members! They are:

Brett Budzinski
Tanya Perry
Steffie Bailey

Dean Senne
Sara Stromstad
Gerald (Jerry) Walseth

Welcome! We are honored to have you with us!!

Calendar

November 18, 2000	Board Meeting	10:00 AM	
December 2, 2000	State Conference	Mankato/Holiday Inn	
January 13, 2001	Board Meeting	9:00 AM	Club Meeting 12:30 PM
March 24, 2001	Board Meeting	10:00 AM	
May 3, 4 & 5, 2001	Regional Convention	Sioux Falls, SD	
May 19, 2001	Board Meeting	9:00 AM	Club Meeting 12:30 PM
July 7, 2001	Board Meeting	10:00 AM	